

## **WIPO University Initiative Program**

**Yumiko Hamano**  
**Senior Program Officer,**  
**WIPO University Initiative Program**  
**Innovation and Technology Transfer Section,**  
**Patents and Innovation Division, WIPO**

© 2012 Yumiko Hamano

## **WIPO University Initiative Program**

- **Adopted by Member States during WIPO General Assembly 2002**
- **To assist universities in building IP and technology management capacity**
- **Integrated into mandates of and administered by the Innovation Division of WIPO**
- **The Program scope and activities renewed**
- **>260 partner universities and R&D institutions worldwide**



## WHY?

**Governments and universities in developing countries are increasingly investing in R&D activities...**

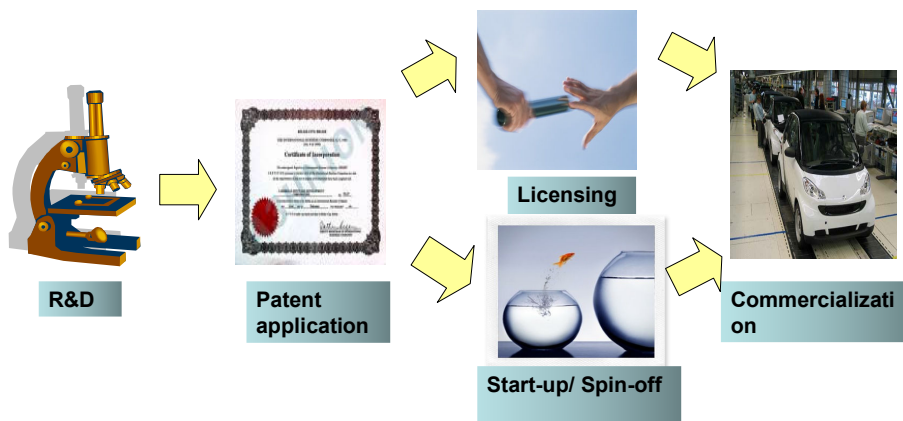
**...but they have not enjoyed the full benefit from the investment due to lack of knowledge and experience in IP and technology management**

**Pressing needs for building technology transfer infrastructure and skills in universities and R&D institutions in WIPO Member States**

WIPO  
WORLD  
INTELLECTUAL PROPERTY  
ORGANIZATION

© 2012 Yumiko Hamano

## From Laboratory to Market



### Technology Transfer

CREATION

PROTECTION

EXPLOITATION

WIPO  
WORLD  
INTELLECTUAL PROPERTY  
ORGANIZATION

© 2012 Yumiko Hamano

## WIPO University Initiative Program <Objectives>

Aims at assisting universities and R&D institutions in:

- Promoting strong scientific research/innovation
- Creating IP and Innovation culture in universities
- Establishing IP infrastructure and technology transfer offices
- Developing their Institutional IP policies
- Enhancing university IP assets
- Developing HR skilled in IP and technology management
- Promoting better understanding of IP/patents
- Promoting IP protection (patents)/fostering use of IP systems
- Effectively managing transfer of technologies (research results) to industry
- Effective commercialization of IP generated in universities
- Innovation/ TT capacity building
- Effective university-industry collaboration
- Creating a national/ regional/ global forum among partner universities so as to share information, knowledge and experience in their IP management

© 2012 Yumiko Hamano

WIPO  
WORLD  
INTELLECTUAL PROPERTY  
ORGANIZATION

## Creation of the IP and Technology Management Infrastructure

- Set up technology transfer offices
- Develop institutional IP policies
- Establish an effective technology transfer mechanism
- Develop effective collaborations between university-industry-government



© 2012 Yumiko Hamano

WIPO  
WORLD  
INTELLECTUAL PROPERTY  
ORGANIZATION

## Developing Skilled Human Capital

- **Raise institutional awareness about the importance of IP and technology transfer**
- **Build capacity and skills in IP and technology management that includes: strategic R&D planning, research collaboration contracts and agreements, identification of IP assets, invention disclosure process, patent information search, decision of IP protection, patent application process, administration of IP legal matters, technology marketing, technology valuation, licensing negotiation and monitoring deals, commercialization and incubation of start-up and spin-off**
- **Develop and disseminate useful tools, guide books, case studies, best practices and information database.**

## Promotion of Effective Use of IP, in particular, Patents

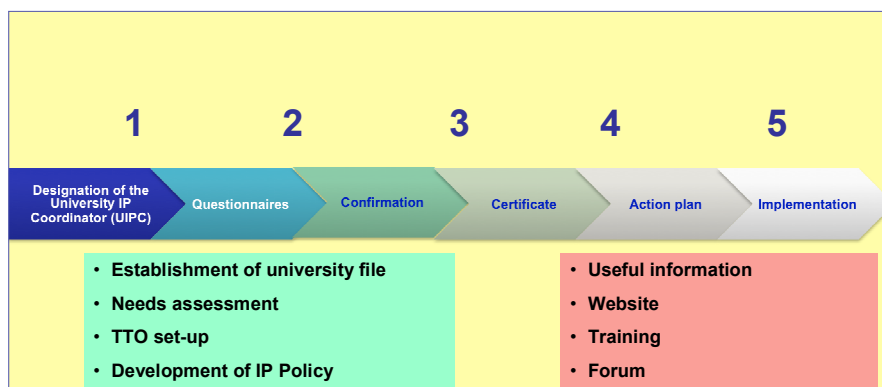
- **Build knowledge of IP systems, especially patent systems**
- **Foster IP protection and better understanding of protection process**
- **Promote use of patent information**



## Creation of National/ Regional/ Global University IP Forum

- **Creating an IP and technology transfer forum among partner universities for the purpose of sharing and disseminating information, experience and best practices**
- **Facilitating national and international collaborations between universities and industries**

## Becoming Partner University



## Country Innovation Framework Report

- Based on communications with UIPC and our research
- Innovation Policy
- Legal framework (ownership, R&D related)
- R&D activities
- Patent system
- Patent activities
- Government support

## Individual Needs Assessment & Customized Action Plan

- Needs assessment based on the Application Form and interview with UIPC
- Individual feedback – each partner institution will receive the feedback
- Four phases of activities depending on the needs
- Some 34 actions
- 3-4 years plan

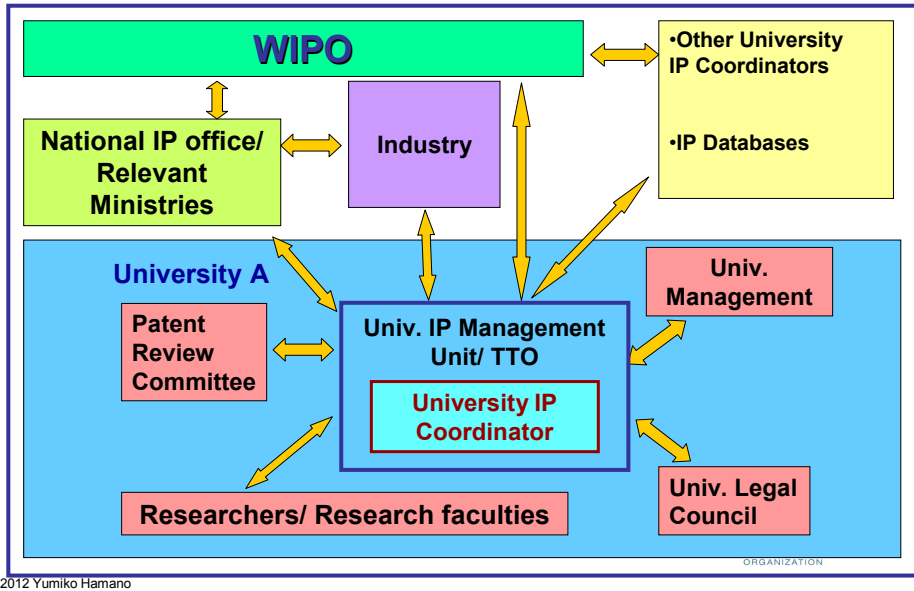
## Implementation of Action Plan

- WIPO will assist in the implementation process
- Observing progress
- Individual communications with UIPCs
- Individual advice and assistance
- Activity report
- Assistance in organizing trainings

## Needs Assessment and Recommended Action Plan

Activity No.	Description of activity	Comments	Indicative timeframe
<p><b>Phase I:</b>  <b>No IP policy, no systematic technology management mechanism in your institution. Very limited IP awareness among researchers. Your institution has just started to be interested in IP matters and technology management. Very few or no patent application/licensing/commercialization of research results for the last 5 years.</b></p> <p>AT THIS STAGE, THE INSTITUTION NEEDS: To review its R&amp;D procedures, establish technology management mechanism and identify potential IP. To consider developing an institutional IP policy and establish an IP management unit/technology transfer office. The UIPC needs to acquire knowledge of IP, patents and technology management. The UIPC should also work on raising awareness among researchers and faculty about IP and technology management in your institution. ESTIMATED TIME NEEDED for establishing the infrastructure of IP management in university: 5-8 months</p>			
1.	Review the WIPO University Initiative Program web pages, which contain useful information on IP and technology management in universities.	The documents/links on the webpage were selected to provide you with a sound introduction to IP and technology management. You will find several concrete examples of institutional IP policies, best practices or case studies from universities around the world.	1-2 weeks
2.	Consider taking the WIPO Academy general distance learning courses and the advanced ones which are of your interests. For further information please visit the webpage at: <a href="http://www.wipo.int/academy/en/courses/distance_learning/">http://www.wipo.int/academy/en/courses/distance_learning/</a> .	These courses would help develop your knowledge of IP. A test at the end of the course will allow you to obtain a certificate of attendance. DL101 is a basic and general IP course offered free of charge. We recommend you and researchers in your institution take the course.	Generally 50-100 h/course. No need to follow the course at specific hours; material can be printed and studied at your own time.
3.	Inform faculty and researchers about your presence and your activities as UIPC.	Depending on the level of IP awareness among researchers, an information meeting could be organized. The meeting could include a 30-40 min PowerPoint presentation regarding basic IP matters and activities of your unit.	1-2 weeks.

## WIPO University Initiative Infrastructure



© 2012 Yumiko Hamano

## Assistance from National IP Offices (IPO)

- **Coordination with partner universities**
- **Provision of information**
  - National legislation texts and updates
  - Awareness material
  - Methodological support
  - Lists of:
    - Local patent agents
    - Local IP related NGOs
- **National IP training**
- **Assistance during patent filing procedures**

WORLD  
INTELLECTUAL PROPERTY  
ORGANIZATION

© 2012 Yumiko Hamano



## WIPO Support

### In the framework of WIPO University Initiative Program

- WIPO Publications
- Review of Institutional IP Policies
- WIPO Distance Learning programs + scholarships
- UIPC web page/ WIPO TT Portal
- Regular value-added information and communications
- Customized and individual needs assessment
- Customized training and seminars
- Invitation to certain conferences/ meetings/ seminars
- Developing guidebooks/ manuals/case studies assisting effective IP and technology management
- E-Newsletter
- Electronic Forum
- Networking (among UIPCs, regional and global)
- Collaboration with Partner Organizations (IPOs, AUTM, PIPRA, UNESCO, ICTP etc.)

© 2012 Yumiko Hamano

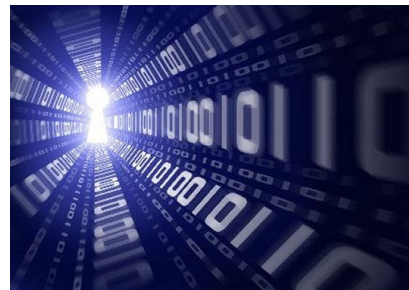


## Training Program:

### **IP and Technology Management for Universities and R&D Institutions**

## Tools and Guidebook:

- IP Policy and Technology Management Procedures for Universities and R&D Institutions**
- University Commercialization Success Stories**



WIPO  
WORLD  
INTELLECTUAL PROPERTY  
ORGANIZATION

© 2012 Yumiko Hamano

## **Innovation Division Other Training Programs**

- Innovation Policy**
- Patent Drafting**
- Technology Licensing**
- Technology Marketing**
- IP Valuation**



## **Development Assistance**

- National Innovation Policy**
- (University) IP Auditing**
- Institutional IP Policy**
- Setting-up TTO**

**WIPO**  
WORLD  
INTELLECTUAL PROPERTY  
ORGANIZATION

© 2012 Yumiko Hamano

**WIPO web site:**

**[www.wipo.int](http://www.wipo.int)**

**WIPO University Initiative web site:**

**[www.wipo.int/uipc/en](http://www.wipo.int/uipc/en)**

**yumiko.hamano@wipo.int**

**WIPO**  
WORLD  
INTELLECTUAL PROPERTY  
ORGANIZATION

## Useful links

<http://www.wipo.int/patentscope/en/>

<http://ep.espacenet.com/>

<http://www.piug.org/vendors.php>

<http://www.wipo.int/classifications/ipc>

WIPO  
WORLD  
INTELLECTUAL PROPERTY  
ORGANIZATION



 **Thank you for your attention**